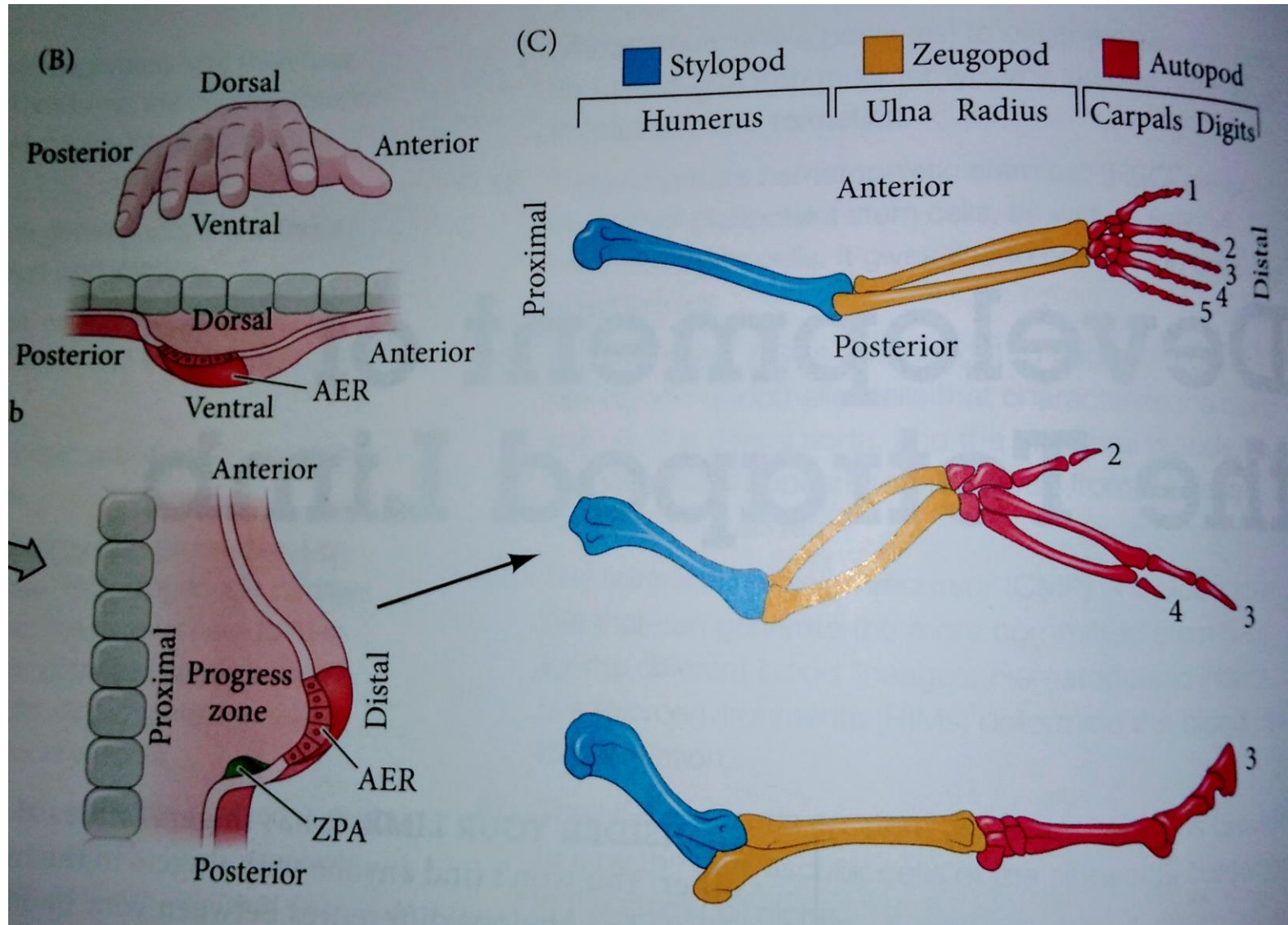


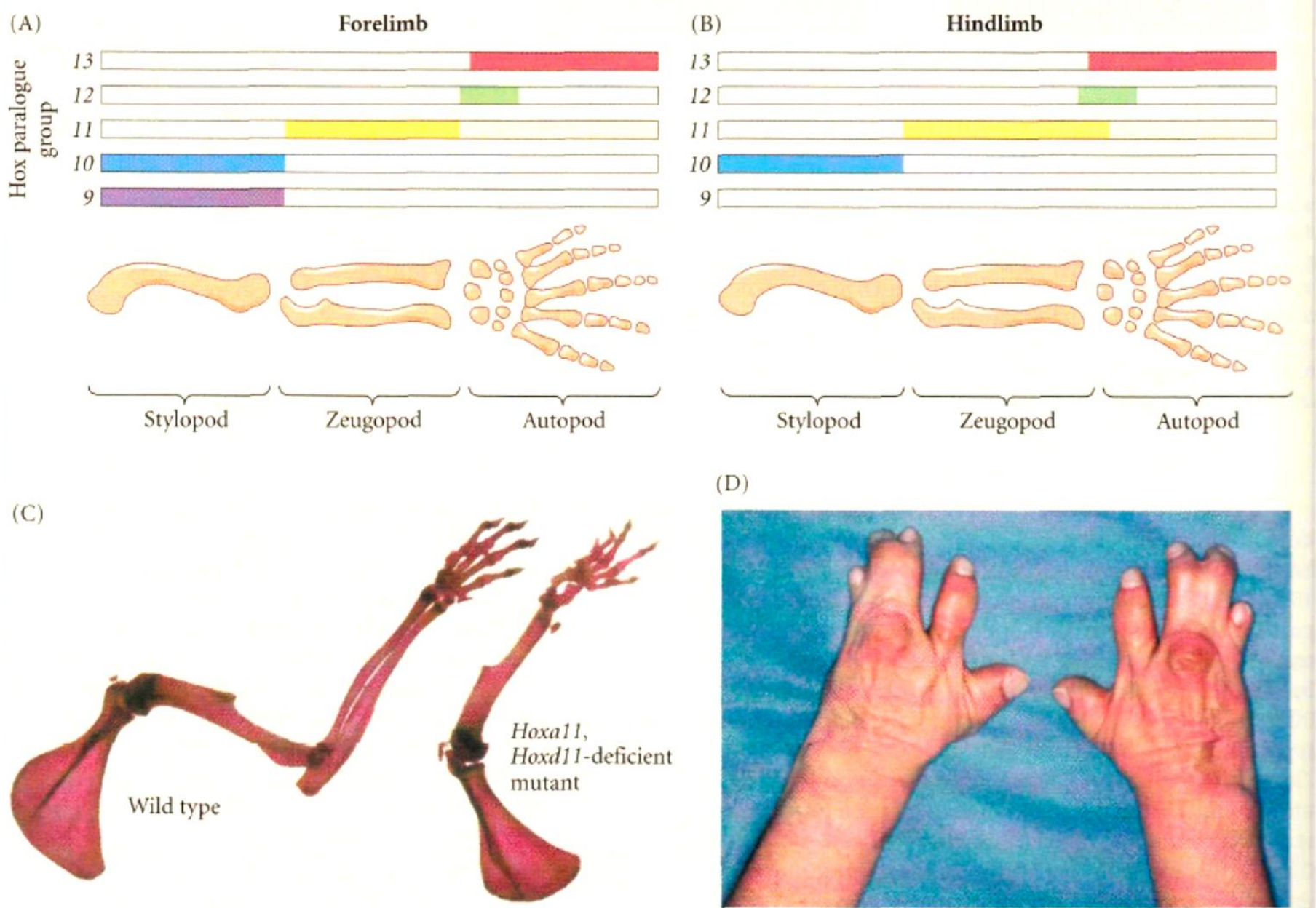
Limb development

PG 2019

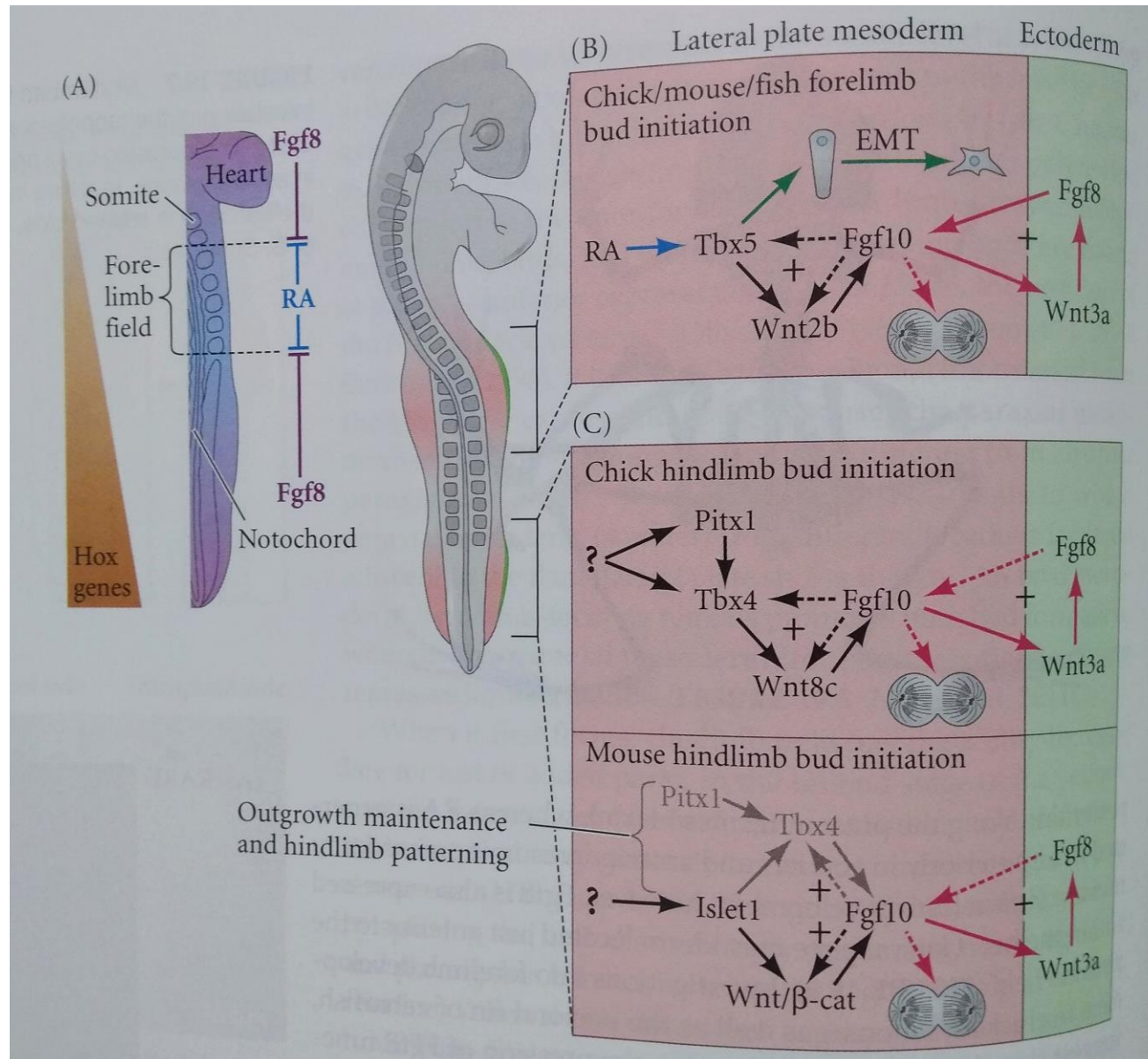
Definitions



Proximal to distal development – Hox genes



Limb field specification



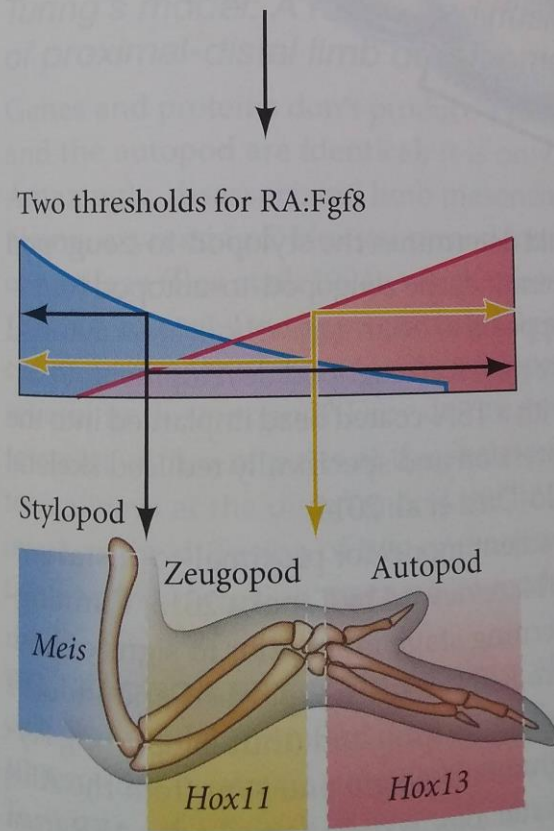
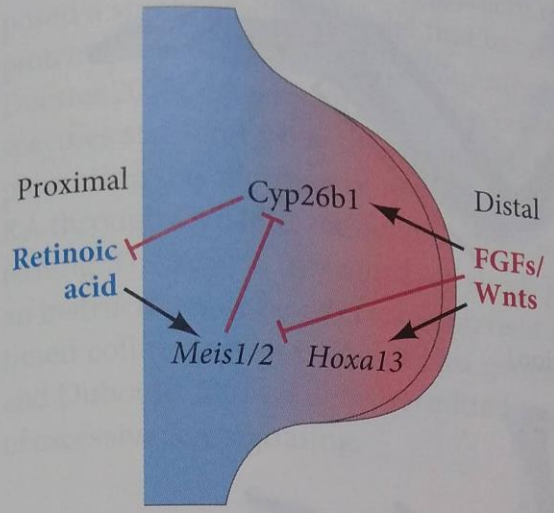
Note:

Tbx5=Fore limb

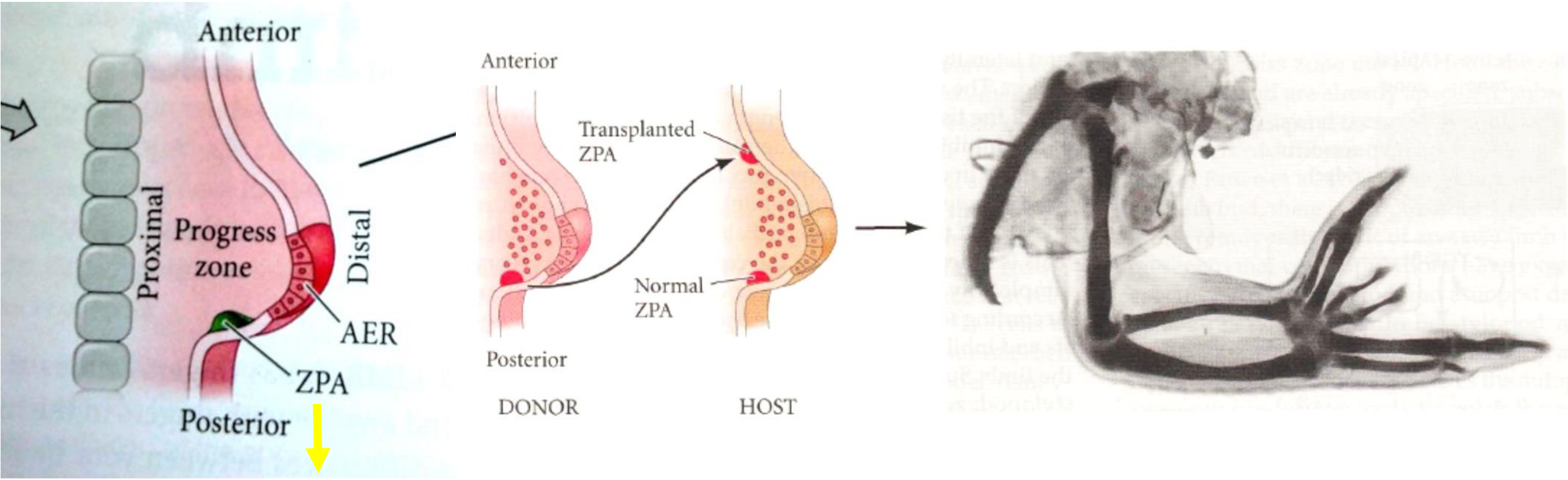
Tbx4+Islet1 & Pitx1=Hind limb

And most important Retinoic acid and FGF8 do not like one another.

Proximal to distal development: Interplay between RA, FGF8 & Hox

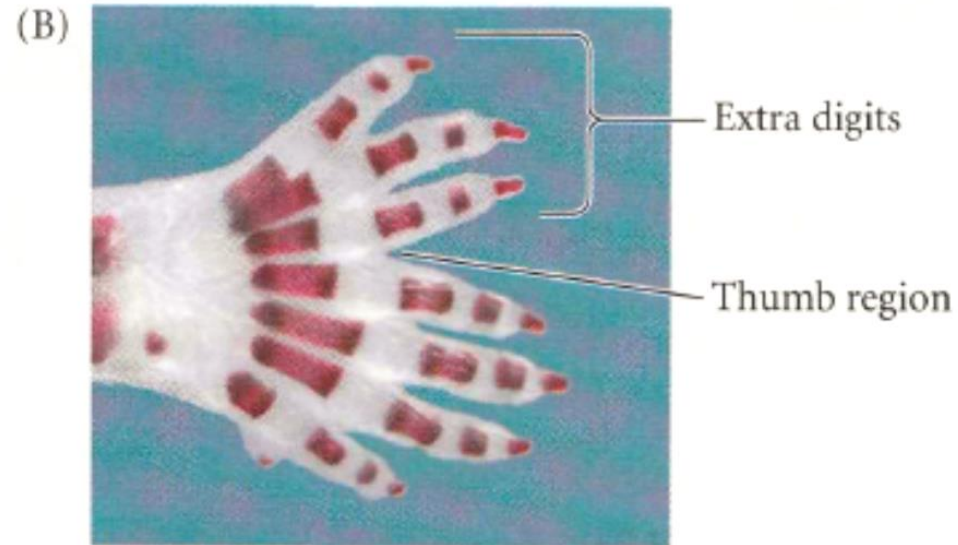
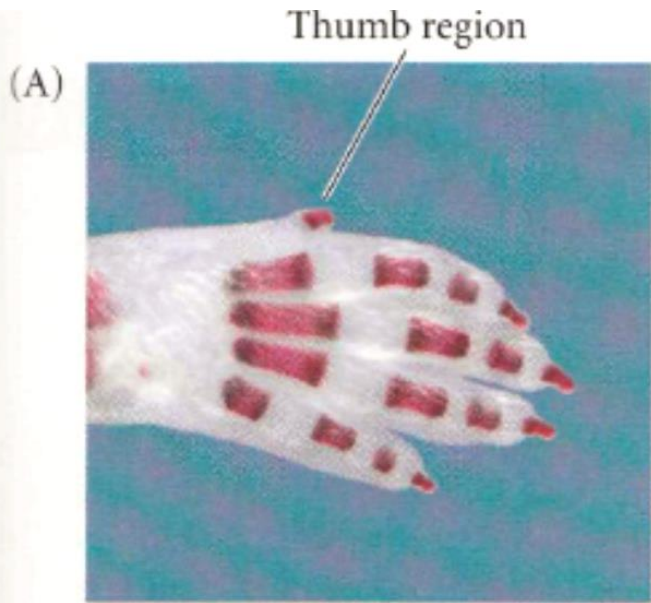


Posterior to Anterior development – Shh

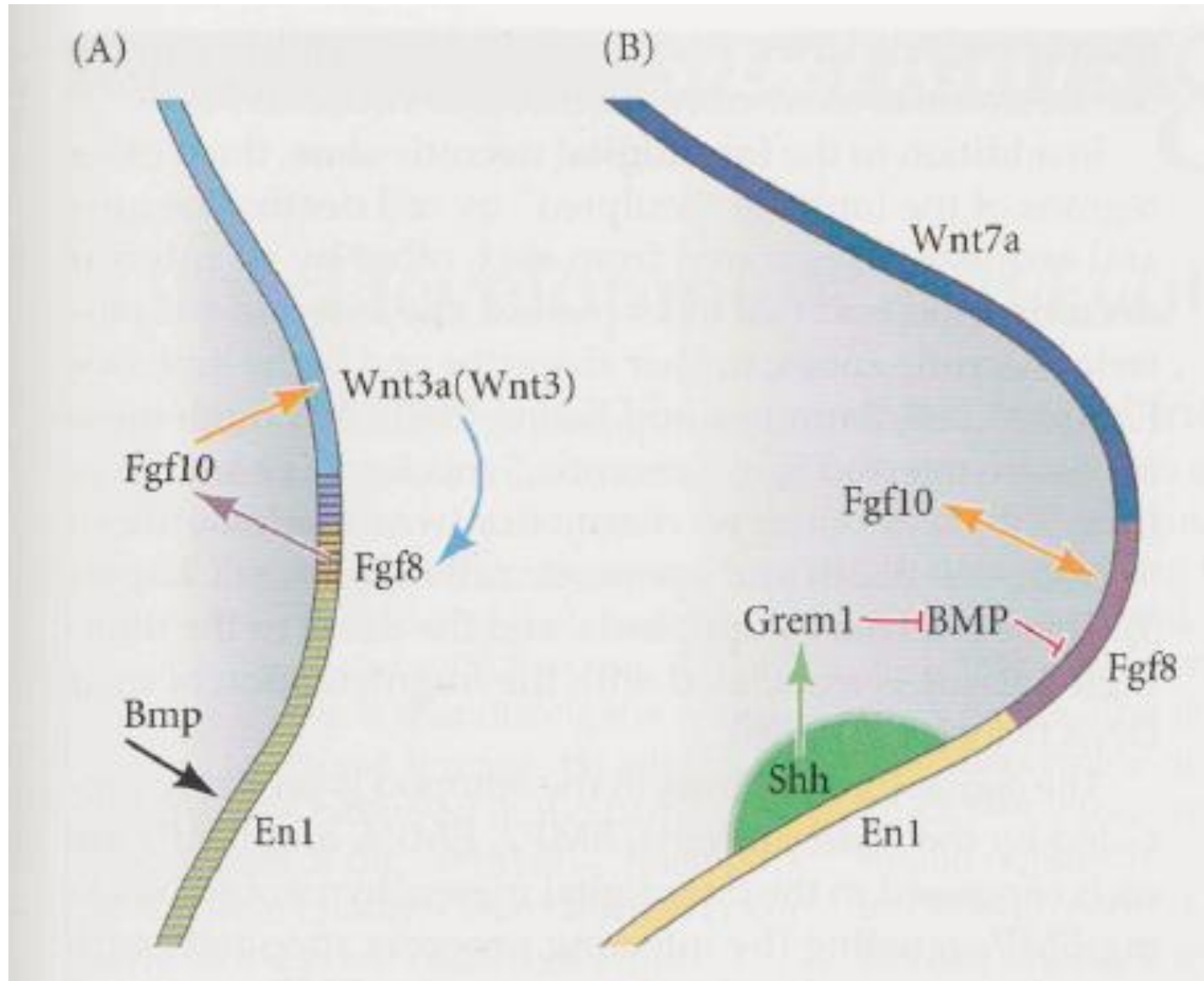


Zone of polarizing activity = more sonic hedgehog = posterior = pinkie finger

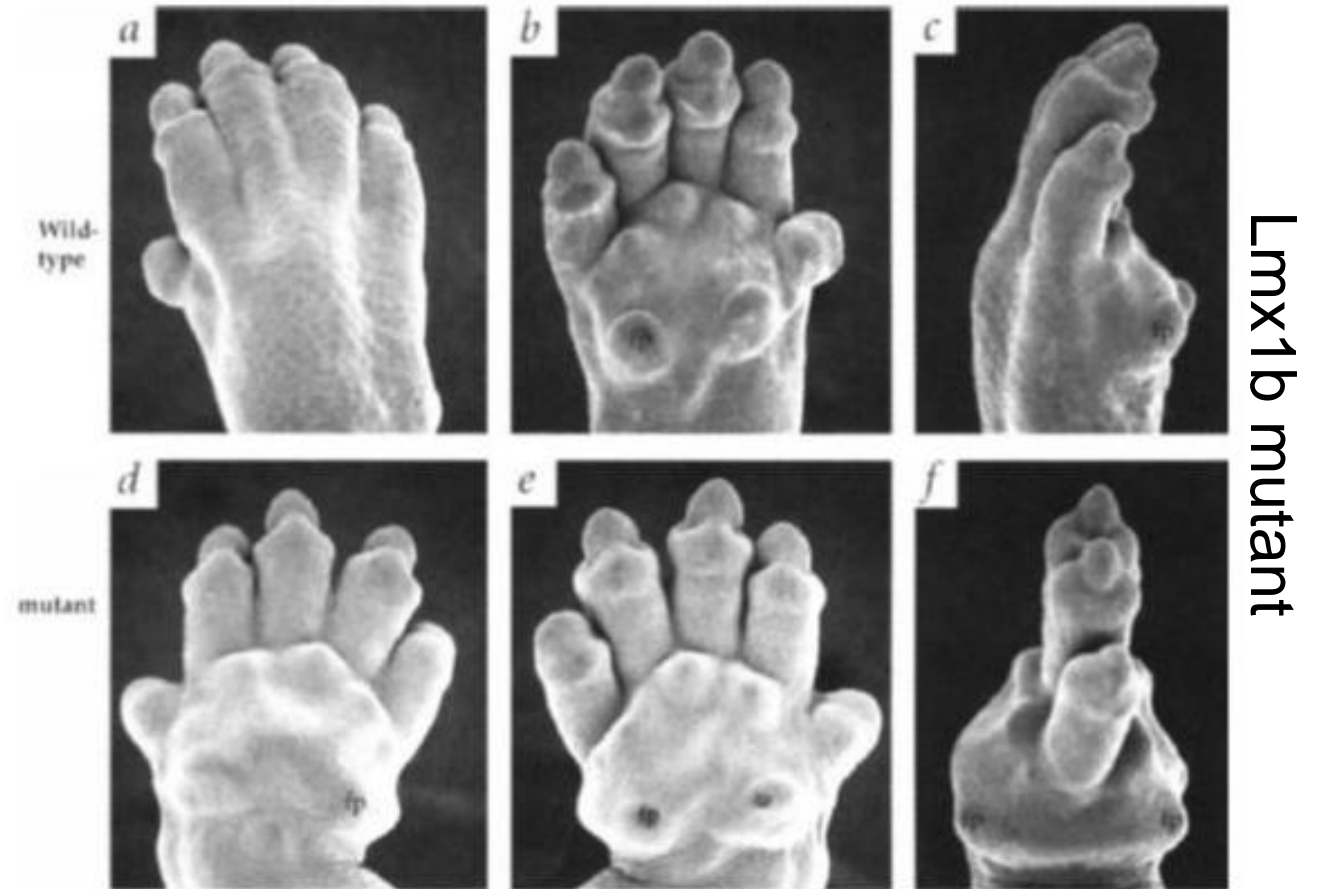
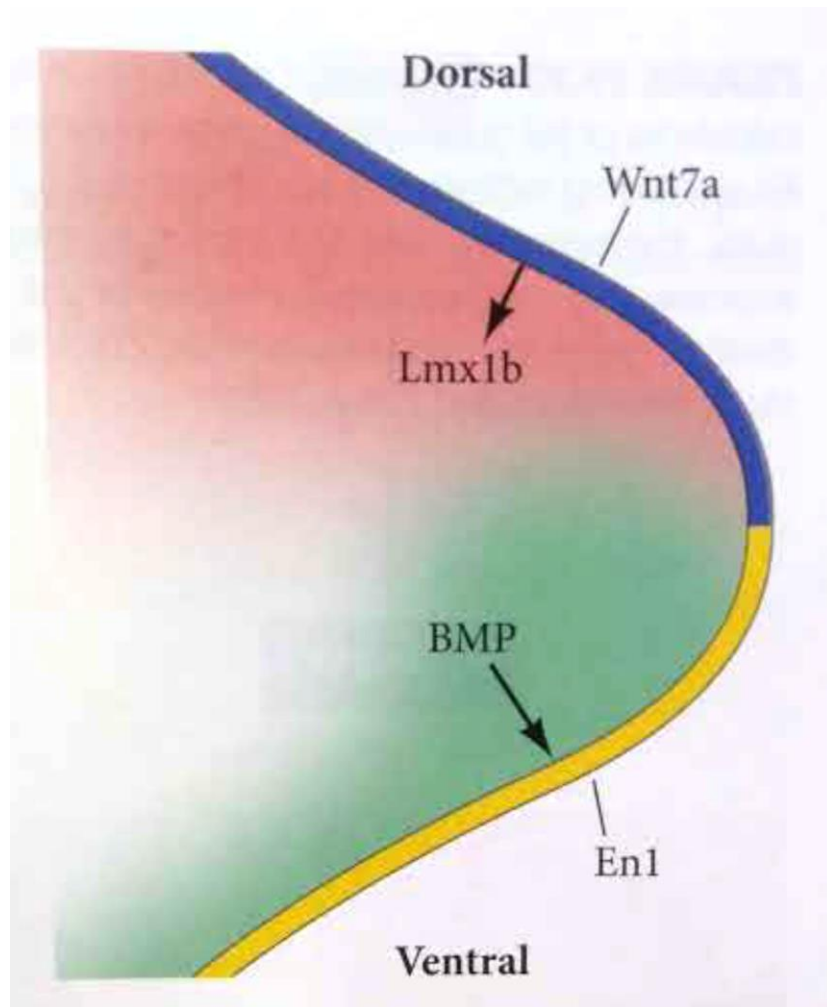
hx mutation



Cross talk



Dorsal to Ventral development – Wnt7a



Chen *et al.*, 1998

BMP is also involved with *Shh*