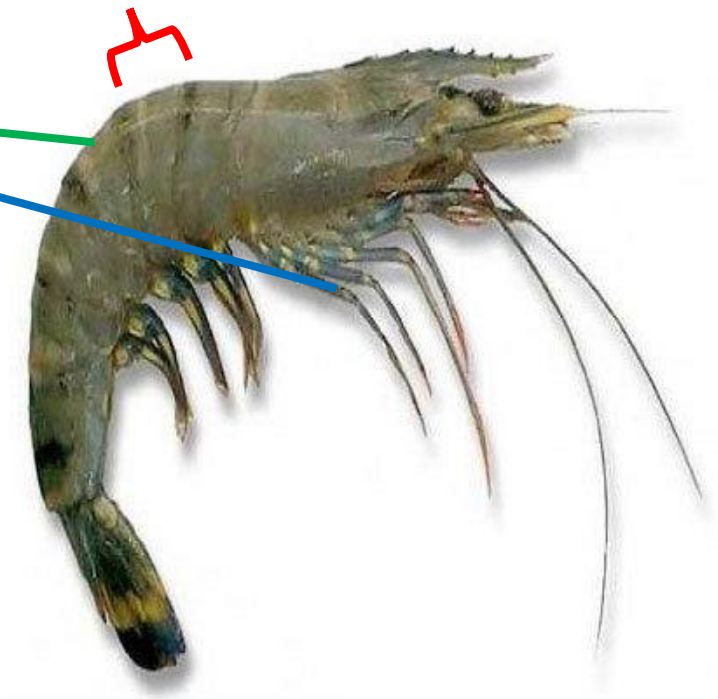
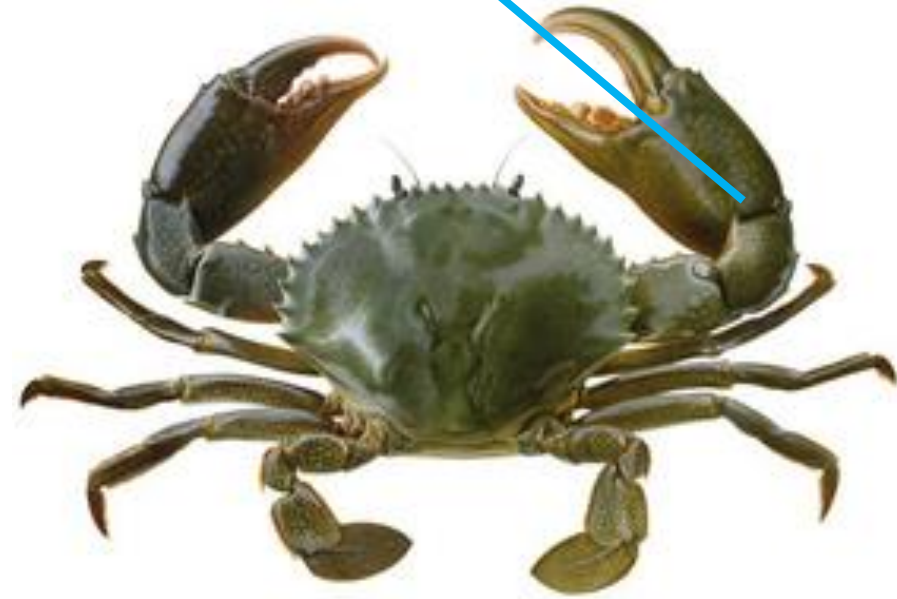
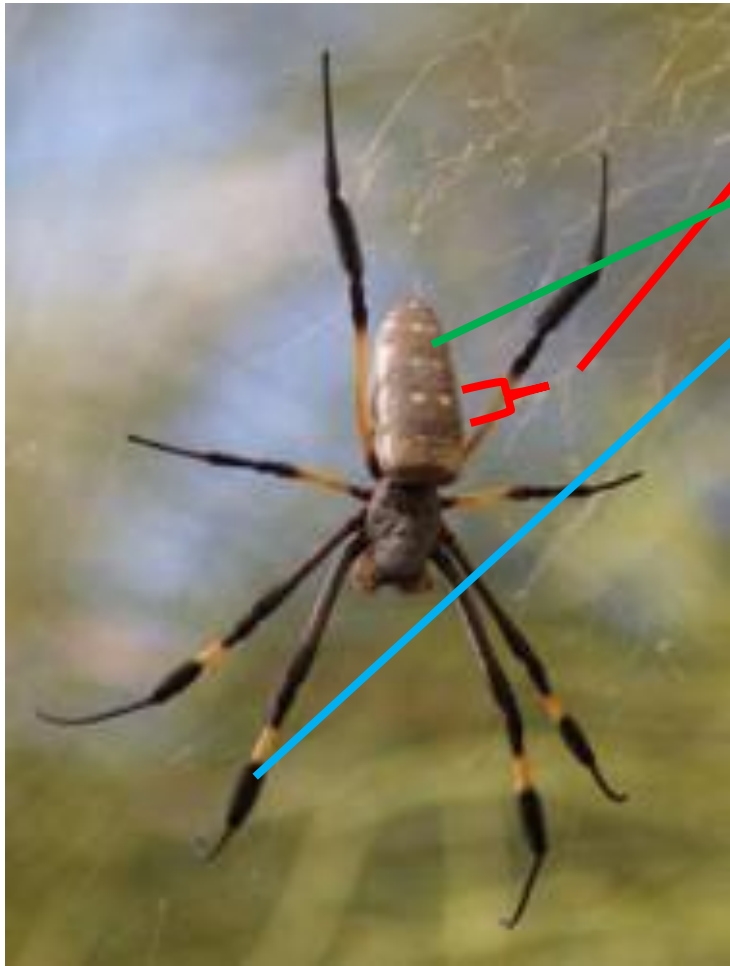


Classification of insects

BIOS01GE01

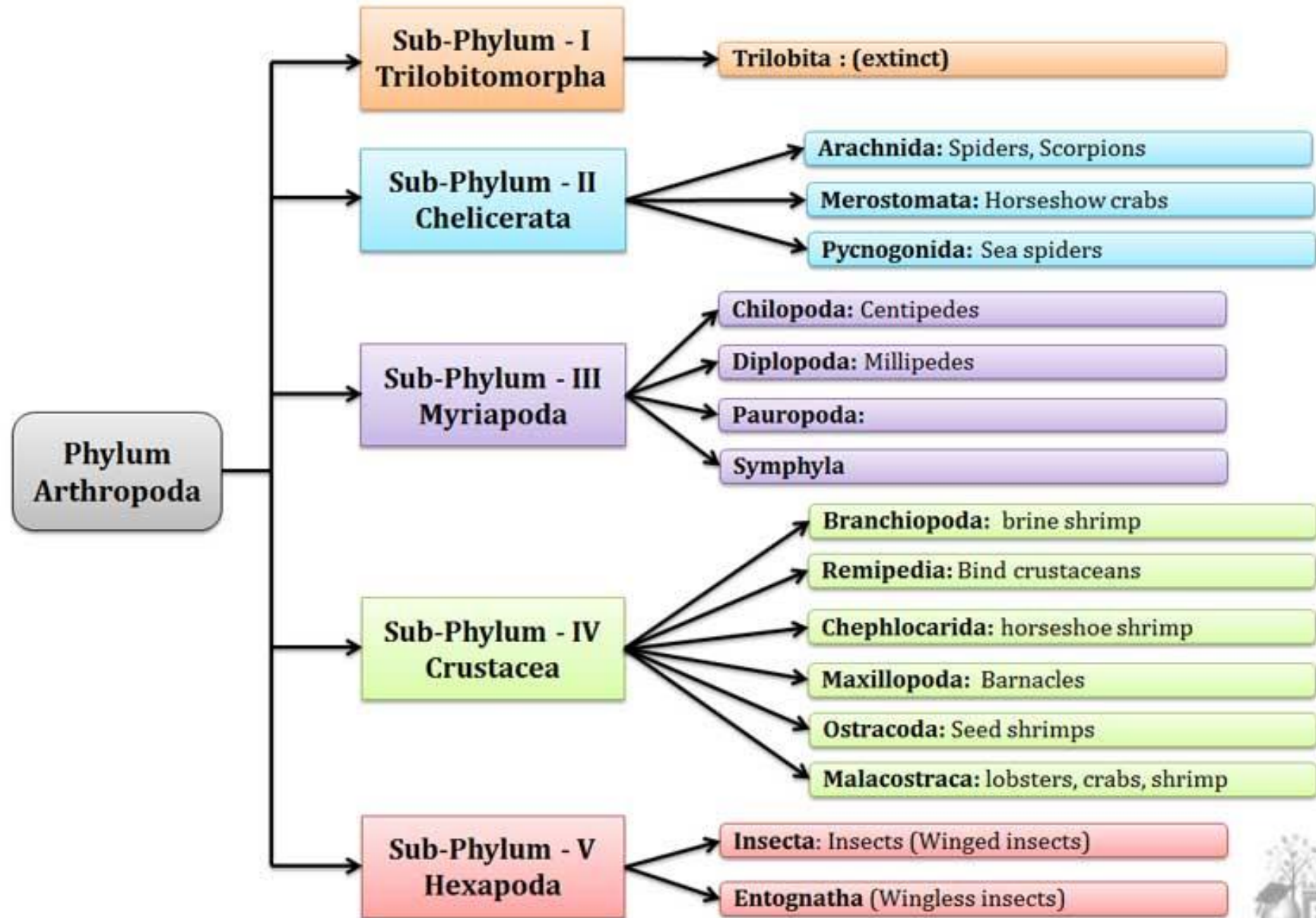
First: Arthropoda

- Segmented body
- Hard exoskeleton
- Externally jointed appendages



Classification of Arthropoda

Classification of Phylum Arthropoda (Mind Map)



Subphylum Hexapoda

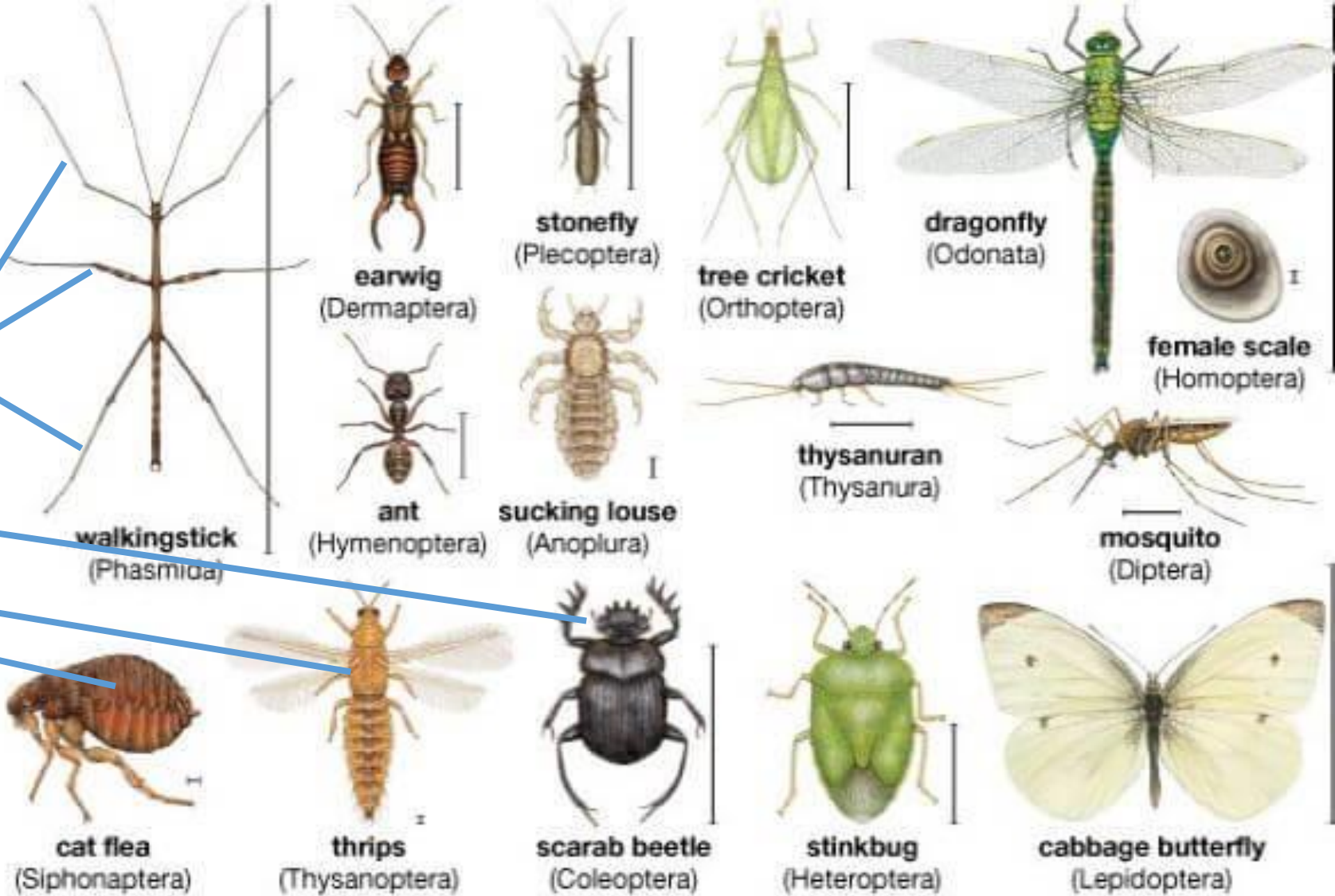
3 pairs of thoracic legs

Body divided into

Head

Thorax

Abdomen

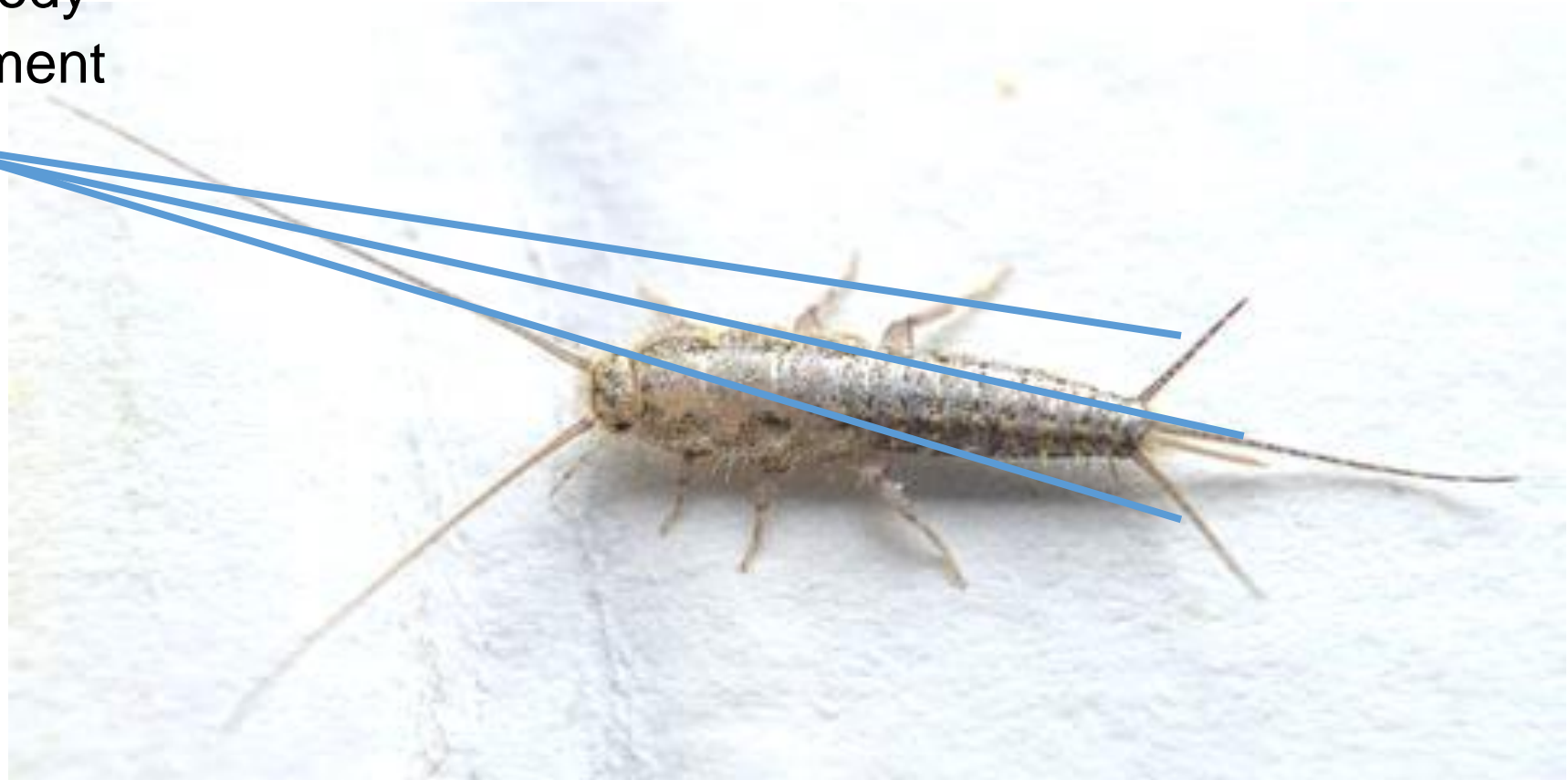


Hexapoda classification

- Class: Entognatha
 - Order: Collembola
 - Order: Protura
 - Order: Diplura
- Class: Insecta
 - Order: Archaeognatha
 - Order: Thysanura
 - Order: Ephemeroptera
 - Order: Odonata
 - Order: Plecoptera
 - Order: Blattodea
 - Order: Isoptera
 - Order: Mantodea
 - Order: Phasmida
 - Order: Grylloblattodea
 - Order: Dermapreta
 - Order: Orthoptera
 - Order: Mantophasmatodea
 - Order: Embioptera
 - Order: Zoraptera
 - Order: Psocoptera
 - Order: Phthiraptera
 - Order: Thysanoptera
 - Order: Hemiptera
 - Order: Strepsiptera
 - Order: Megaloptera
 - Order: Raphidioptera
 - Order: Neuroptera
 - Order: Coleoptera
 - Order: Mecoptera
 - Order: Siphonaptera
 - Order: Diptera
 - Order: Trichoptera
 - Order: Lepidoptera
 - Order: Hymenoptera

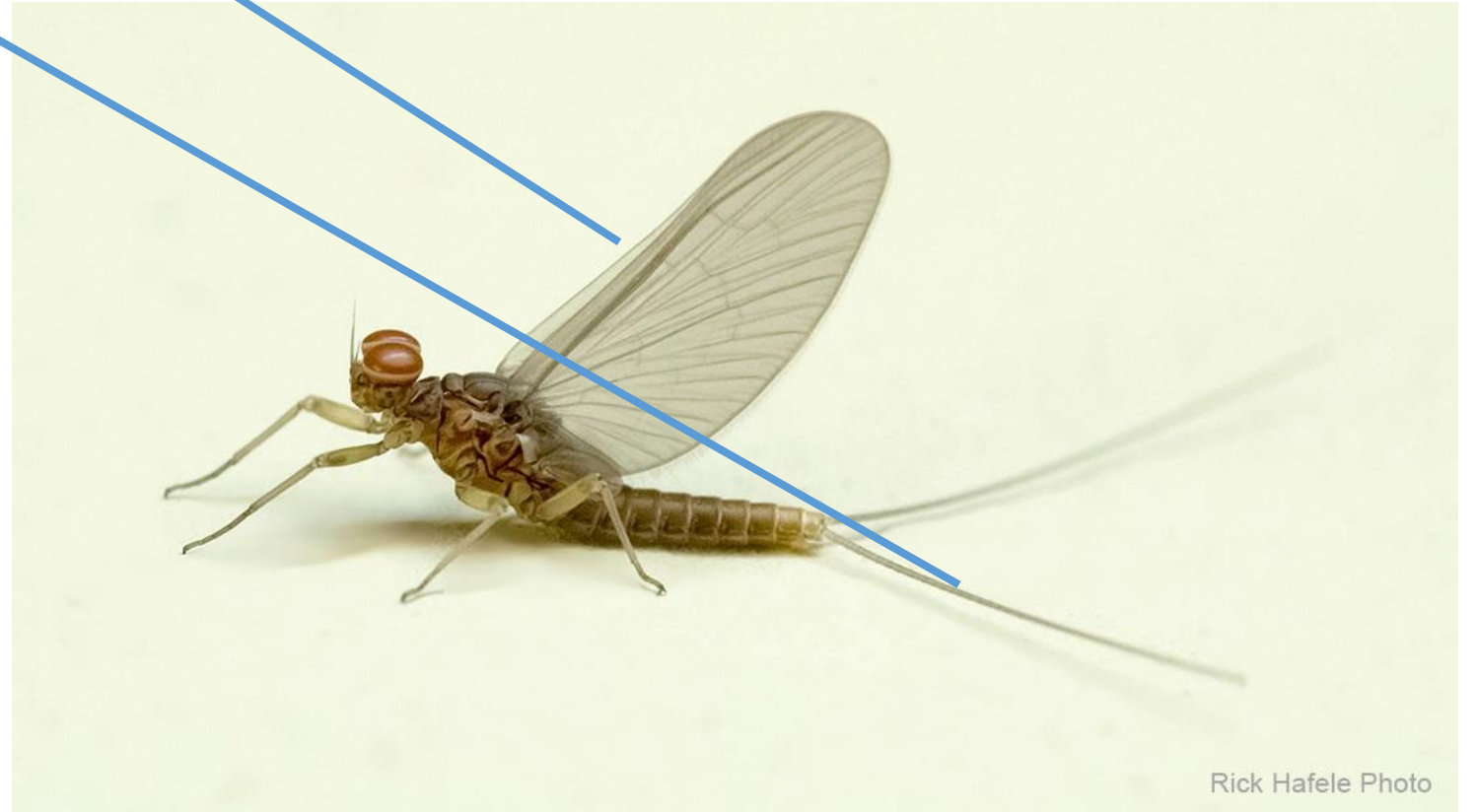
Order: Thysanura

- Small, wingless, flattened body
- Scale covered body
- Simple development
- 3 caudal cerci



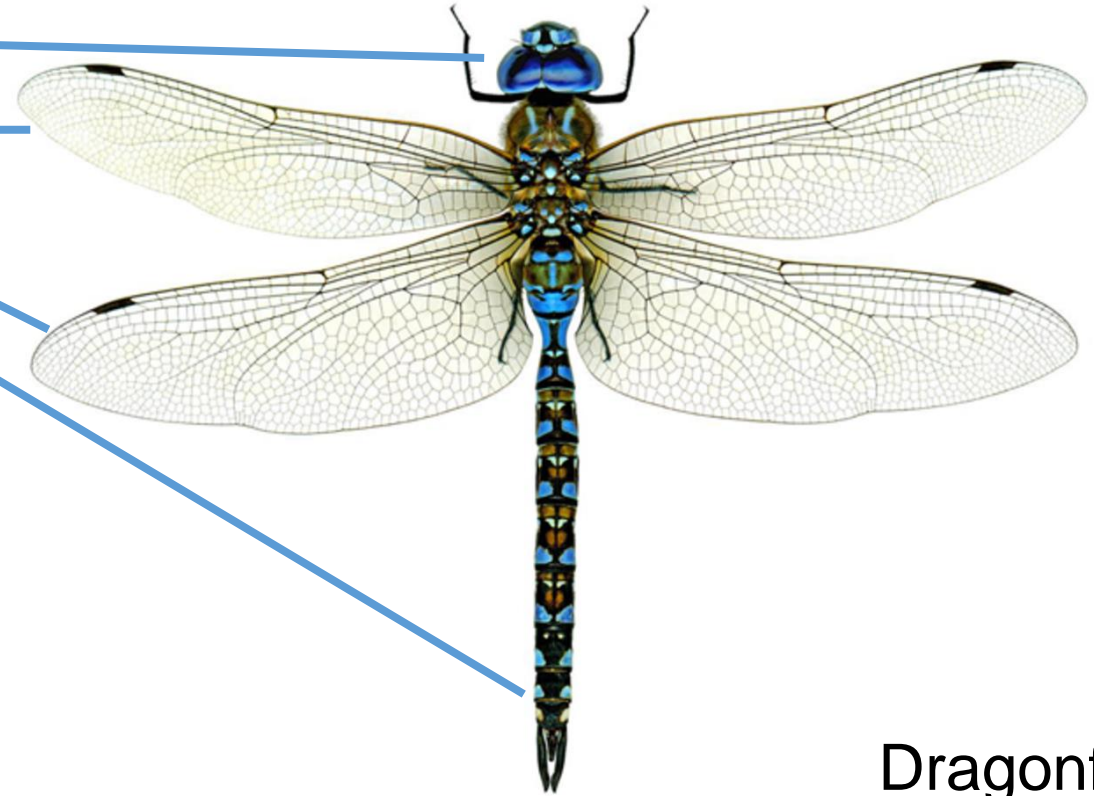
Order: Ephemeroptera

- Wings held vertically at rest
- Long, articulated cerci
- Aquatic larvae



Order: Odonata

- Large compound eyes
- Two pairs of large wings
- Abdomen slender and long
- Aquatic larvae



Dragonfly



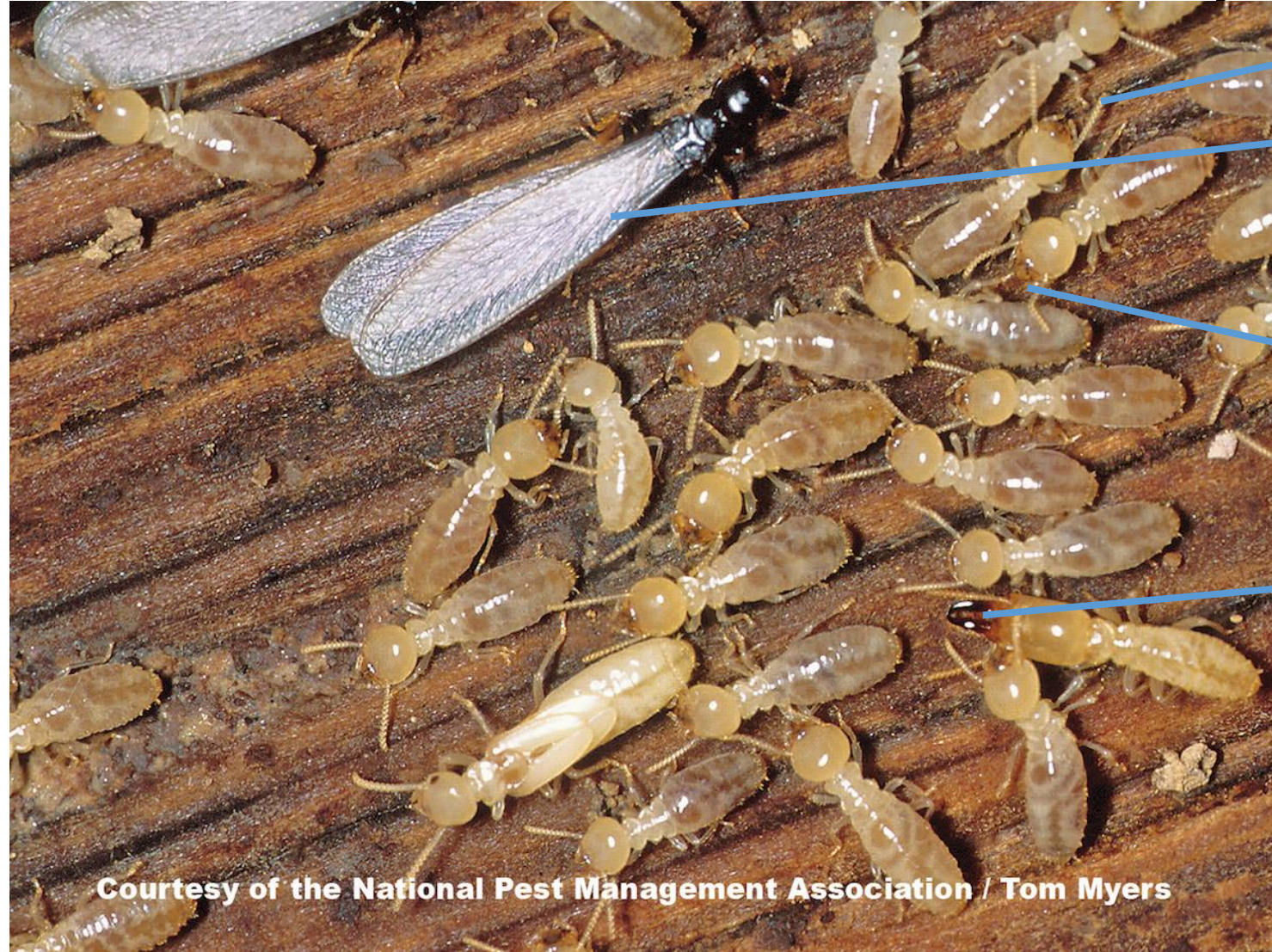
Damselfly

Order: Blattodea

- Flattened body
- Large pronotum
- Leathery forewings
- Articulated cerci



Order: Isoptera

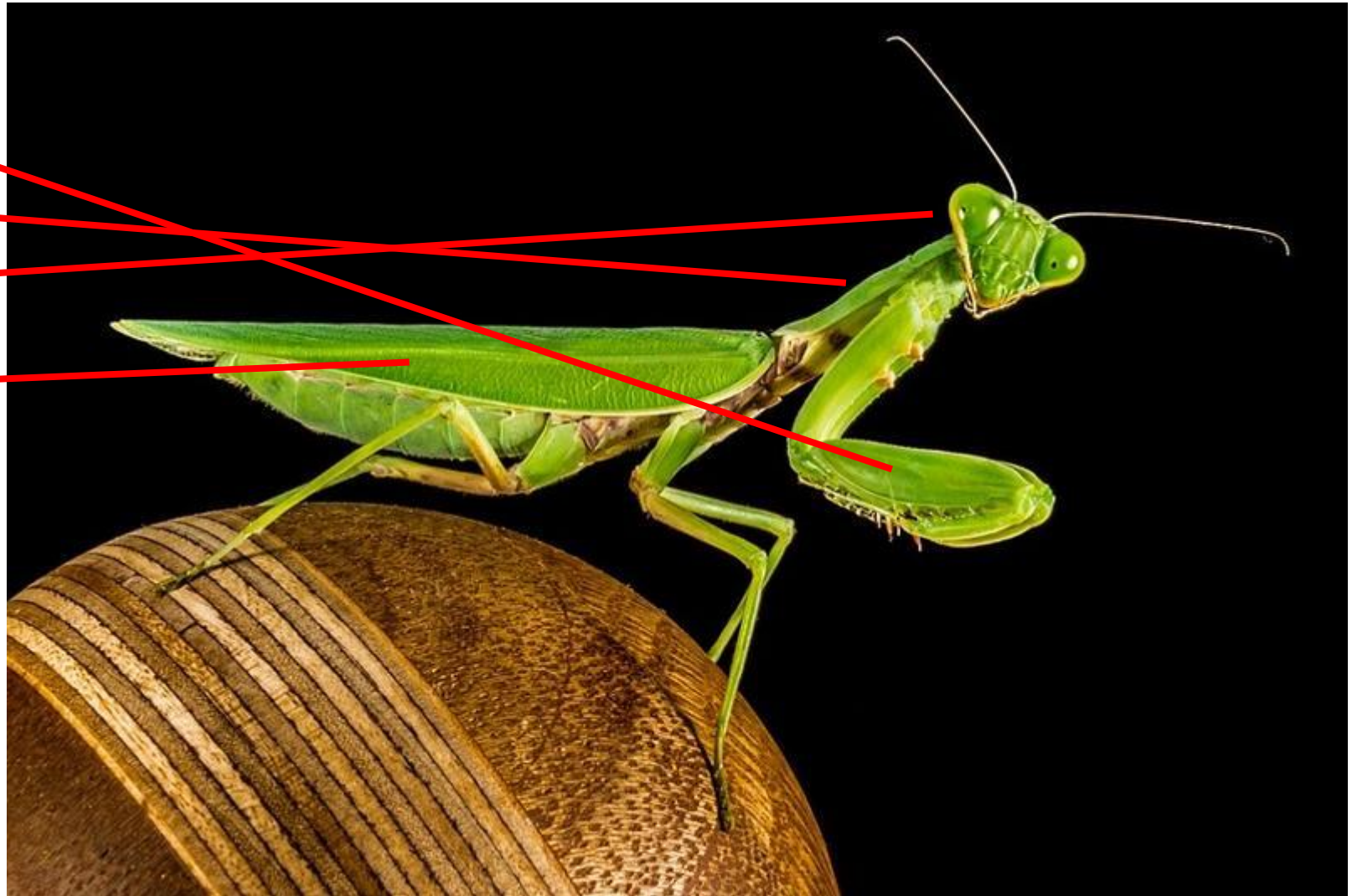


- Short antennae
- 2 pairs equal sized wings (when present)
- Social structure present
- Workers are blind and have small mandible
- Queen has wings
- Soldiers are blind have large mandible

Courtesy of the National Pest Management Association / Tom Myers

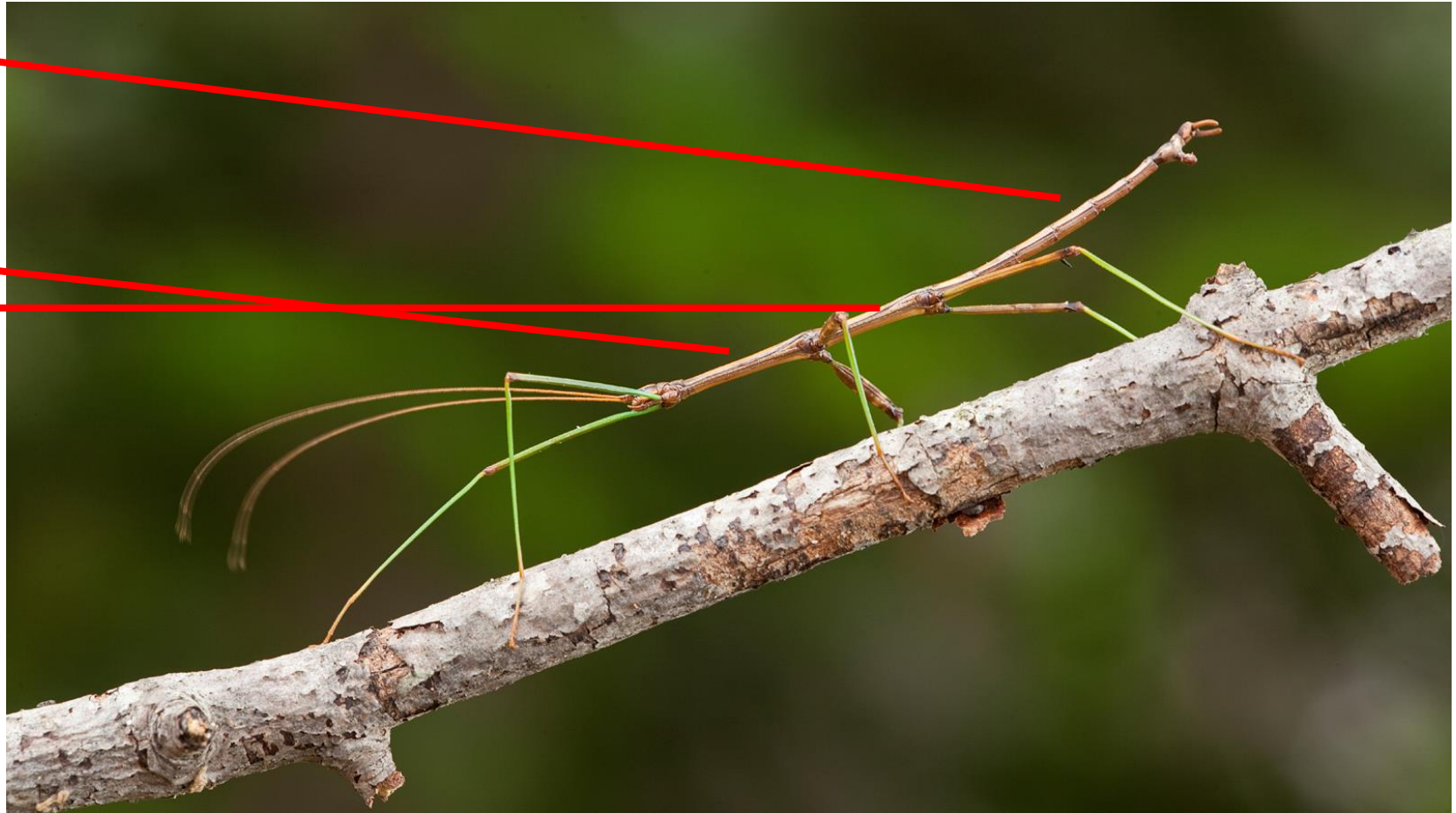
Order: Mantodea

- Large, raptorial first pair of legs
- Elongated prothorax
- Mobile head
- Thickened forewings



Order: Phasmida

- Cylindrical or markedly flattened (dorsoventrally) body
- Short prothorax and very long meso and metathorax



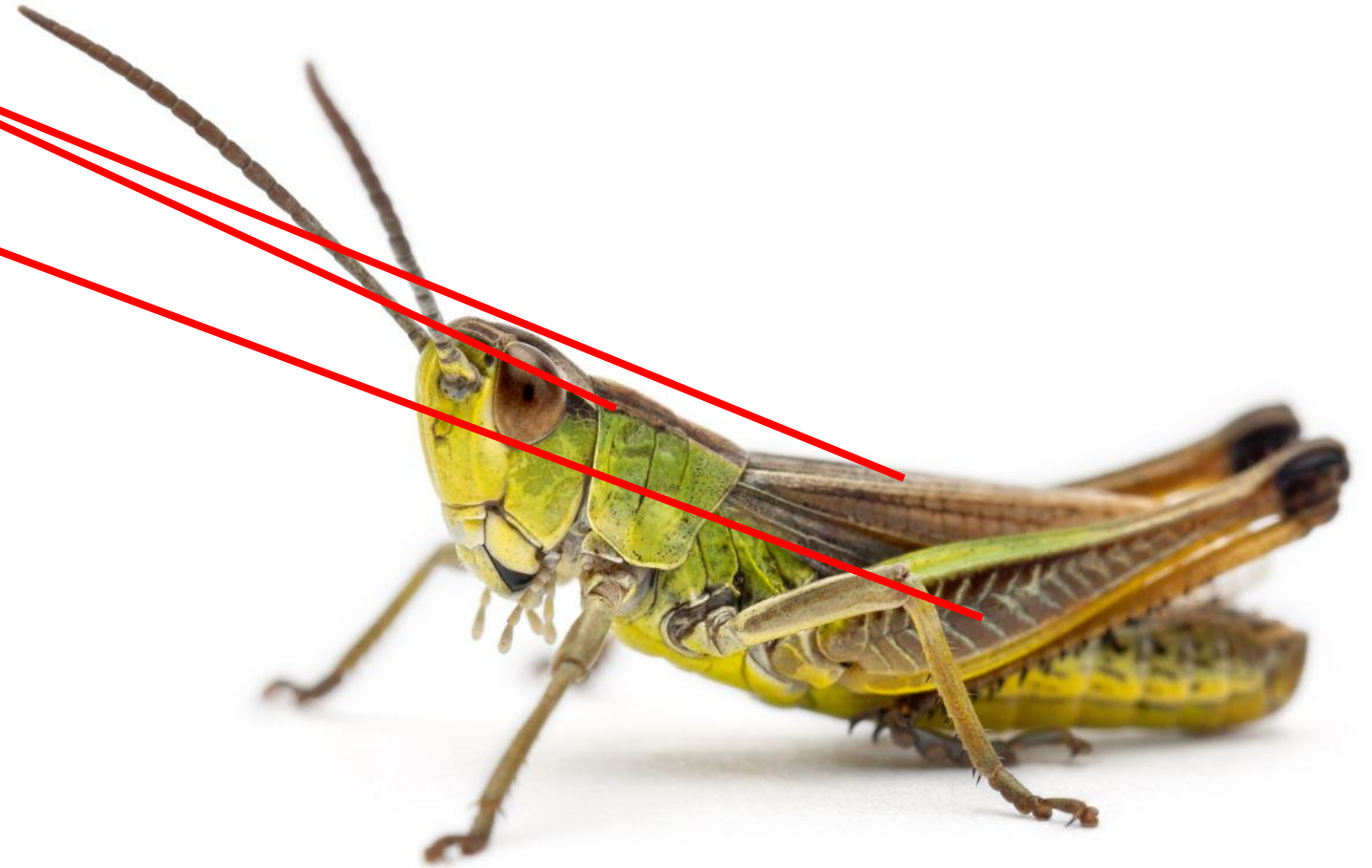
Order: Dermaptera

- Forceps shaped cerci
- Forewings small and leathery
- Membranous hind wing
- Long antennae



Order: Orthoptera

- Large pronotum
- Part of forewings leather
- Hind leg is enlarged



Order: Phthiraptera

- Wing less
- Blood sucking, ectoparasite
- Membranous cuticle



Order: Hemiptera

- Piercing sucking mouthparts
- Large pronotum
- Wings membranous
- Some can produce stinking chemicals



Bed Bug

- satan's ultimate form
- begins as a one night stand
- then demands more
- moves in forever



Wheel Bug

- wears steampunk armor
- pretends to protect your garden
- injects you with enzymes
- kills jumping spiders



Boxelder Bug

- has huge orgies on your house
- thousands pile up
- eats your maple seeds
- lazy fucking sunbathers



Kissing Bug

- like a bedbug, but classier
- only likes facial stuff
- head looks like a cone
- gives you worms



Stink Bug

- cant fly for shit
- smells like cilantro
- designed by mc escher
- eats your fruit too



Conifer Seed Bug

- thinks it's Italian
- eats only pine nuts
- wears a mobster suit
- lives in your house all winter



Cicada

- goes all out for its 17th birthday
- thinks everyone wants to hear it sing
- wont let you sleep
- leaves its shed skin everywhere



Giant Water Bug

- has the jaws of Satan
- sits in ponds waiting for you
- also injects enzymes
- fucks your toes up for weeks

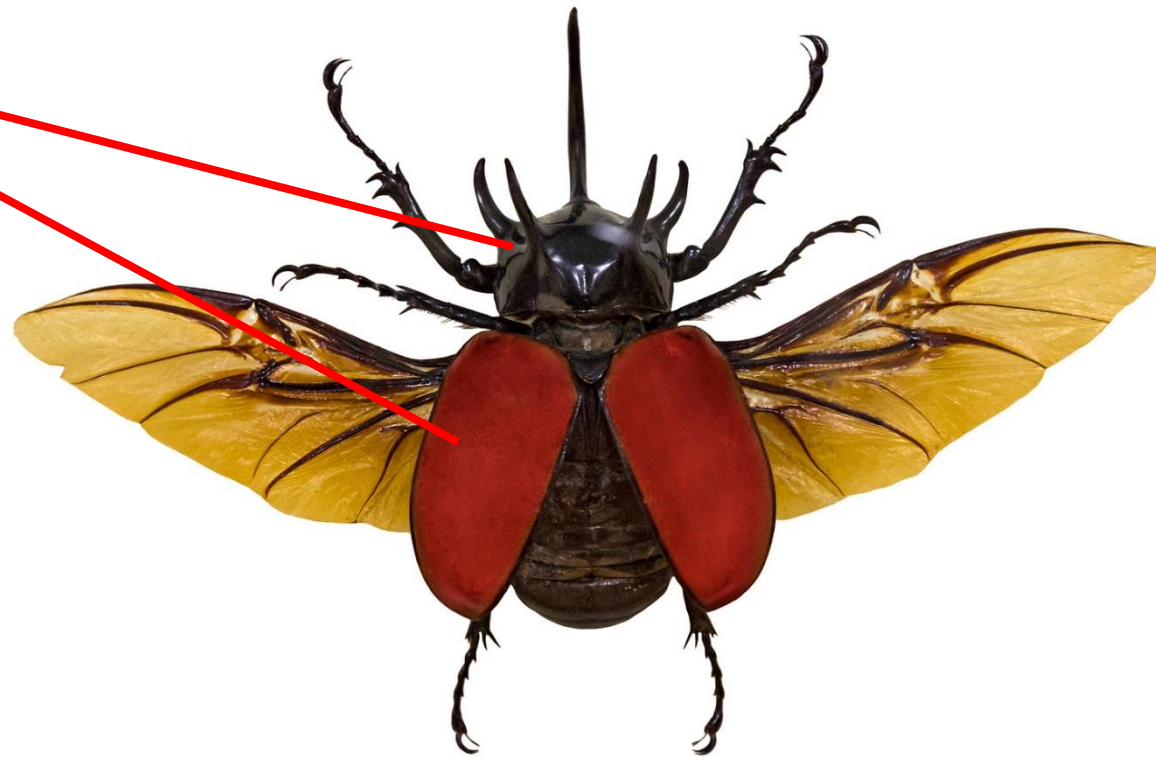
Order: Neuroptera

- Highly veined wings resting tent-like on abdomen



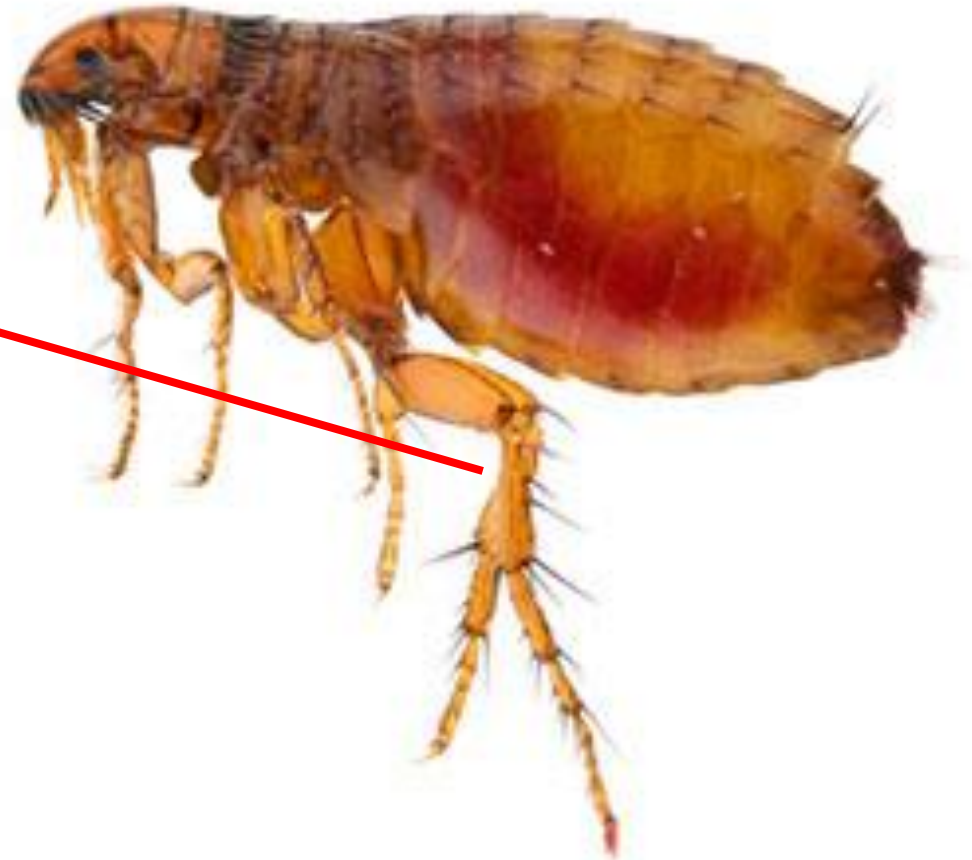
Order: Coleoptera

- Heavily sclerotized body
- Forewings modified into elytra



Order: Siphonaptera

- Wingless
- Laterally compressed body
- Hindlegs modified for jumping
- Ectoparasite



Order: Diptera

- One pair of wings
- Hindwings modified into halteres
- Large complex eyes



Order: Lepidoptera

- Tubular, coiled mouthparts
- Two pairs of wing that are generally coupled



Order: Hymenoptera

- Small hind wings coupled with large forewings
- Generally with squeezed first abdominal segment

